

About our prospectus

# Welcome to our eProspectus

Lorem ipsum dolor sit amet, consectetur adipiscing elit, do eius mod tempor incididunt ut labore et dolore magna aliqua. Ut enim ad min im veniam, quis nostrud exercitationi ullamco laboris nisi ut aliquip ex ea commodo consequat.

Lorem ipsum dolor sit amet, consectetur adipiscing elit, do eius mod tempor incididunt ut labore et dolore magna aliqua.

[Opportunities >](#)


## Exciting Upcoming Events



### Virtual Open Day

📅 December 20, 2020–  
December 20, 2022  
anytime



### Spaghetti Slurping Day

📅 December 25, 2021  
8am–10pm



### World Made Up Day

📅 February 3, 2022–December 2,  
2021  
12pm

[See all events >](#)

What's been happening?

# How to Search & Apply

Guide for Learners v2.0

About our prospectus

# Welcome to our eProspectus

Lorem ipsum dolor sit amet, consectetur adipisicing elit, do eius mod tempor incididunt ut labore et dolore magna aliqua. Ut enim ad min im veniam, quis nostrud exercitation ullamco laboris nisi ut aliquip ex ea commodo consequat.

Lorem ipsum dolor sit amet, consectetur adipisicing elit, do eius mod tempor incididunt ut labore et dolore magna aliqua.

[Opportunities >](#)

## Creating an Application

Step by Step instructions for creating an application in the new eProspectus.

*\*Please note the version of your site may be slightly different to what is shown in this document and will say Positive Steps @16 rather than eprospectus\**

The first step is to log in to your account



Login

Sign Up

Username

bhat2345678

Password

.....

Log In

[Forgotten your username?](#) / [Forgotten your password?](#)

[Return to homepage](#)

## Terms and conditions

Before you proceed we want you to know exactly how our prospectus works and why we need your details. Please state that you have read and agreed to these terms before you continue.

I agree to the [Terms and Conditions](#) and [Privacy Policy](#) for this website and I give my permission for the information to be shared with the employer, education, careers advisers or training provider when any application is made. It will NOT be passed on to any other parties without your permission.

Please note that if you do not consent your information will not be saved and/or shared, and with respect to any on-line applications, you will have to apply using a different format. Please contact the provider directly to find out more.

I have read and agree to the Terms and Conditions

Cancel

Logo

Logo

Logo

Logo

Logo

You will be asked to read and agree to the 'Terms and Conditions'. You must agree to be able to apply using this platform.

# Your account

Get the most out of all the eProspectus services you use.



## Welcome back, Aiden

What do you want to do today?

### Apply

You need to fully complete both your profile and next steps before you can make an application.

#### Your profile

A record of your information.

Status **Incomplete**

[Update your details](#)



#### Your next step

Where you plan to go after year 11?

Status **Incomplete**

[Change destination](#)



#### Your Applications

Management centre.

[Review applications](#)



### At a glance...

Everything you need to know about in one handy place.



#### Your Profile

Why not get your profile started?

This page allows you to access all the sections of your application and indicates your progress in each section.

If this is your first application and you haven't completed your Profile Template all the sections will need completing, for additional applications your profile details will have been saved and just the Course Choices will need completing.

# Your profile

Your individual user information that is used for creating your applications.



[← Back to your account](#)

This is all about you, **Aiden**.

In order to complete your profile, please work through and complete each of the sections.

## Personal Details

Information about you.

Status **incomplete**

[Update details](#)



## Address

Information about where you live.

Status **incomplete**

[Update details](#)



## Health

Information about your health.

Status **incomplete**

[Update details](#)



## Parental Details

Contact details of your parent, carer or guardian.

Status **incomplete**

[Update details](#)



## Qualifications

List all your qualifications from

## Personal Statement

Your chance to describe your

## Equality and Diversity

This section is all about who you are

## Work Experience

This section is all about the work

You can work in any order but we will start with clicking on **Personal Details**.

aj54@mymail.com

School Email Address \*

jafar5674@myschool.sch.uk

## Personal Details

This section covers information about you.

First Name \*

Aiden

Last Name \*

Jafar

Preferred First Name

Preferred Last Name

Date Of Birth

For example, 12 10 2004

Day

Month

Year

07

03

2006

### At a glance...

How much have you completed?

X

Personal Details

X

Address

X

Health

X

Parental Details

X

Qualifications

X

Personal Statement

X

Equality and Diversity

X

Work Experience

### Personal Details

Fill in any details that are missing, and check any data pulled through from your profile template

Click **Save and Continue** to save your changes.

# Your profile

Your individual user information that is used for creating your applications.



[← Back to your account](#)

## This is all about you, **Aiden**.

In order to complete your profile, please work through and complete each of the sections.

### Personal Details

Information about you.

Status complete

[Update details](#) >

### Address

Information about where you live,.

Status incomplete

[Update details](#) >

### Health

Information about your health.

Status incomplete

[Update details](#) >

### Parental Details

Contact details of your parent, carer or guardian.

Status incomplete

[Update details](#) >

### Qualifications

List all your qualifications from

### Personal Statement

Your chance to describe your

### Equality and Diversity

This section is all about who you are

### Work Experience

This section is all about the work

[◀ Back to your profile](#)

## Address

Information about where you live.

Address Line 1 \*

130 Hinchbrooke Road

Address Line 2

Huntingham

Town \*

Camberlyshire

County \*

Cambridgeshire

Postcode \*

PE29 3BN

Country \*

United Kingdom

### At a glance...

How much have you completed?



Personal Details



Address



Health



Parental Details



Qualifications



Personal Statement



Equality and Diversity



Work Experience

Fill in any details that are missing, and check any data pulled through from your profile template

Click **Save and Continue** to save your changes.

# Your profile

Your individual user information that is used for creating your applications.



[◀ Back to your account](#)

## This is all about you, **Aiden**.

In order to complete your profile, please work through and complete each of the sections.

### Personal Details

Information about you.

Status complete

[Update details](#)

### Address

Information about where you live.

Status complete

[Update details](#)

### Health

Information about your health.

Status incomplete

[Update details](#)

### Parental Details

Contact details of your parent, carer or guardian.

Status incomplete

[Update details](#)

### Qualifications

List all your qualifications from

### Personal Statement

Your chance to describe your

### Equality and Diversity

This section is all about who you are

### Work Experience

This section is all about the work

[◀ Back to your profile](#)

## Health

Information about your health.

### Learning difficulty, disability or health problem

Do you consider yourself to have any medical disability, learning difficulty or other health problem?

☐ Yes ☒ No

### EHCP

Do you have an EHCP?

☐ Yes ☒ No

[Save and continue](#)

[Cancel](#)

### At a glance...

How much have you completed?

✓	Personal Details
✓	Address
✗	Health
✗	Parental Details
✗	Qualifications
✗	Personal Statement
✗	Equality and Diversity
✗	Work Experience

Fill in any details that are missing, and check any data pulled through from your profile template

Click **Save and Continue** to save your changes.

# Your profile

Your individual user information that is used for creating your applications.



[← Back to your account](#)

## This is all about you, **Aiden**.

In order to complete your profile, please work through and complete each of the sections.

### Personal Details

Information about you.

Status complete

[Update details](#)



### Address

Information about where you live.

Status complete

[Update details](#)



### Health

Information about your health.

Status complete

[Update details](#)



### Parental Details

Contact details of your parent, carer or guardian.

Status incomplete

[Update details](#)



### Qualifications

List all your qualifications from

### Personal Statement

Your chance to describe your

### Equality and Diversity

This section is all about who you are

### Work Experience

This section is all about the work



[< Back](#)

Parental Information

Contact Details

Parent Details

Please select

Parent Details

Parent Details

Parent Details

Parent Details

Parent Details

Please select

Parent Details

Parent Details

Parent Details

Parent Details

Parent Details

Parent Title \*

Mr

Parent First Name \*

Jamil

Parent Last Name \*

Jafar

Parent Relationship \*

Father

Parent Telephone 1 \*

0775564321

Parent Telephone 2

Parent Email Address \*

jj87@mymail.com

Live With Parent?



Yes



No



Work Experience

*Parental Information* Here you need to enter your parent/carer/guardian's details. Once you have filled in all the fields click **Save and Continue** to save your changes.

# Your profile

Your individual user information that is used for creating your applications.



[← Back to your account](#)

## This is all about you, **Aiden**.

In order to complete your profile, please work through and complete each of the sections.

<div><b>Personal Details</b></div> <div>Information about you.</div> <div>Status <div>complete</div></div> <div><a href="#">Update details</a> &gt;</div>	<div><b>Address</b></div> <div>Information about where you live,.</div> <div>Status <div>complete</div></div> <div><a href="#">Update details</a> &gt;</div>	<div><b>Health</b></div> <div>Information about your health.</div> <div>Status <div>complete</div></div> <div><a href="#">Update details</a> &gt;</div>	<div><b>Parental Details</b></div> <div>Contact details of your parent, carer or guardian.</div> <div>Status <div>complete</div></div> <div><a href="#">Update details</a> &gt;</div>
<div><b>Qualifications</b></div> <div>List all your qualifications from secondary education onwards.</div> <div>Status <div>incomplete</div></div> <div><a href="#">Update details</a> &gt;</div>	<div><b>Personal Statement</b></div> <div>Your chance to describe your ambitions, skills, and experience.</div> <div>Status <div>incomplete</div></div> <div><a href="#">Update details</a> &gt;</div>	<div><b>Equality and Diversity</b></div> <div>This section is all about who you are and what you believe.</div> <div>Status <div>incomplete</div></div> <div><a href="#">Update details</a> &gt;</div>	<div><b>Work Experience</b></div> <div>This section is all about the work experience you have had, including any part time jobs, and references.</div> <div>Status <div>incomplete</div></div> <div><a href="#">Update details</a> &gt;</div>

A green circle highlights the 'Qualifications' and 'Personal Statement' sections of the profile form. A white mouse cursor is pointing at the 'Update details' link for the 'Qualifications' section.

◀ Back to your profile

## Qualifications

Add all the qualifications you have achieved or are expecting to achieve for this result for.

Your qualifications

English

Maths

Add a new

Subject

History

Qualification Type

GCSE or Equivalent

Grade

6

Entry Type

Predicted

Completion Date

Subject

Month

Year

06

2022

Qualification Type

Please Select...

Grade

✓ Address

✓ Health

✓ Parental Details

### Qualifications

Your qualifications have been loaded by the school you will not be able to amend them – so you can skip this section.

Unless you are taking any additional qualifications outside of school e.g. a language or subject not taught in school, you will need to enter your qualifications. If you start typing the subject in the Title box, the options will appear. Select your qualification type, grade and entry type (Predicted grade or actual grade) then check the completion date is correct. Once complete, press Add. Continue this process until all your qualifications are added then press **Save and Continue** to save your changes.

[◀ Back to your profile](#)

## Qualifications

Add all the qualifications you are currently studying at school. You will also need to add the ones that you have completed and have a result for.

### Your qualifications

English	GCSE or Equivalent	5 (p)	06/2022	<a href="#">Edit Qualification</a>	<a href="#">Delete Qualification</a>
Maths	GCSE or Equivalent	7 (p)	06/2022	<a href="#">Edit Qualification</a>	<a href="#">Delete Qualification</a>
History	GCSE or Equivalent	6 (p)	06/2022	<a href="#">Edit Qualification</a>	<a href="#">Delete Qualification</a>

### Add a new qualification

Subject

Qualification Type

### At a glance...

How much have you completed?



Personal Details



Address

# Your profile

Your individual user information that is used for creating your applications.



## Personal Statement

This will have been loaded by the school you will be able to amend and change this.

[◀ Back to your account](#)

This is all about you, **Aiden**.

In order to complete your profile, please work through and complete each of the sections.

<b>Personal Details</b> Information about you. Status <b>complete</b> <a href="#">Update details</a> >	<b>Address</b> Information about where you live. Status <b>complete</b> <a href="#">Update details</a> >	<b>Health</b> Information about your health. Status <b>complete</b> <a href="#">Update details</a> >	<b>Parental Details</b> Contact details of your parent, carer or guardian. Status <b>complete</b> <a href="#">Update details</a> >
<b>Qualifications</b> List all your qualifications from secondary education onwards. Status <b>complete</b> <a href="#">Update details</a> >	<b>Personal Statement</b> Your chance to describe your ambitions, skills, and experience. Status <b>incomplete</b> <a href="#">Update details</a> >	<b>Equality and Diversity</b> This section is all about who you are and what you believe. Status <b>incomplete</b> <a href="#">Update details</a> >	<b>Work Experience</b> This section is all about the work experience you have had, including any part time jobs, and references. Status <b>incomplete</b> <a href="#">Update details</a> >

[← Back to your profile](#)

## Personal Statement

Include interests and hobbies. You could also talk about your favourite subject and careers aspirations. This should make you sound as good as you can be, so don't put anything negative – but be honest at the same time!

### Personal Statement \*

Include interests and hobbies. You could also talk about your favourite subject and careers aspirations. This should make you sound as good as you can be, so don't put anything negative – but be honest at the same time!

I've got a good attendance record for school and work, also I am reliable and honest. In my spare time I like to spend it at the skate park riding my scooter but when I am not there I like to be with my friends and family. I go to school Monday to Friday and then from school I go straight to work.

You have 5000 characters remaining

[Save and continue](#)[Cancel](#)

### At a glance...

How much have you completed?



Personal Details



Address



Health



Parental Details



Qualifications



Personal Statement



Equality and Diversity



Work Experience

# Your profile

Your individual user information that is used for creating your applications.



[◀ Back to your account](#)

## This is all about you, **Aiden**.

In order to complete your profile, please work through and complete each of the sections.

<div><b>Personal Details</b></div> <div>Information about you.</div> <div>Status <div>complete</div></div> <div><a href="#">Update details</a> &gt;</div>	<div><b>Address</b></div> <div>Information about where you live,.</div> <div>Status <div>complete</div></div> <div><a href="#">Update details</a> &gt;</div>	<div><b>Health</b></div> <div>Information about your health.</div> <div>Status <div>complete</div></div> <div><a href="#">Update details</a> &gt;</div>	<div><b>Parental Details</b></div> <div>Contact details of your parent, carer or guardian.</div> <div>Status <div>complete</div></div> <div><a href="#">Update details</a> &gt;</div>
<div><b>Qualifications</b></div> <div>List all your qualifications from secondary education onwards.</div> <div>Status <div>complete</div></div> <div><a href="#">Update details</a> &gt;</div>	<div><b>Personal Statement</b></div> <div>Your chance to describe your ambitions, skills, and experience.</div> <div>Status <div>complete</div></div> <div><a href="#">Update details</a> &gt;</div>	<div><b>Equality and Diversity</b></div> <div>This section is all about who you are and what you believe.</div> <div>Status <div>incomplete</div></div> <div><a href="#">Update details</a> &gt;</div>	<div><b>Work Experience</b></div> <div>This section is all about the work experience you have had, including any part time jobs, and references.</div> <div>Status <div>incomplete</div></div> <div><a href="#">Update details</a> &gt;</div>

[◀ Back to your profile](#)

## Equality and Diversity

If you do not wish to answer any of the questions please choose the option 'Prefer not to say'.

### Sexual Orientation \*

With regards to your sexual orientation, which of the following best describes how you think or feel about yourself?

Please Select...

### Religion or Belief \*

With regards to your religion or belief, which of the following best describes how you think about yourself?

Please Select...

### Ethnicity \*

Please indicate your ethnic group or background by selecting the most appropriate drop down option.

Not Set

[Save and continue](#)

[Cancel](#)

### At a glance...

How much have you completed?

- ✓ Personal Details
- ✓ Address
- ✓ Health
- ✓ Parental Details
- ✓ Qualifications
- ✓ Personal Statement
- ✗ Equality and Diversity
- ✗ Work Experience

### Equality and Diversity

Here you need to fill in your sexual orientation and religious beliefs. If you don't wish to enter these, just select the **Prefer Not To Say**

option in the drop down

Click **Save and Continue** to save your changes.

# Your profile

Your individual user information that is used for creating your applications.



[◀ Back to your account](#)

## This is all about you, **Aiden**.

In order to complete your profile, please work through and complete each of the sections.

### Personal Details

Information about you.

Status **complete**

[Update details >](#)

### Address

Information about where you live.

Status **complete**

[Update details >](#)

### Health

Information about your health.

Status **complete**

[Update details >](#)

### Parental Details

Contact details of your parent, carer or guardian.

Status **complete**

[Update details >](#)

### Qualifications

List all your qualifications from secondary education onwards.

Status **complete**

[Update details >](#)

### Personal Statement

Your chance to describe your ambitions, skills, and experience.

Status **complete**

[Update details >](#)

### Equality and Diversity

This section is all about who you are and what you believe.

Status **complete**

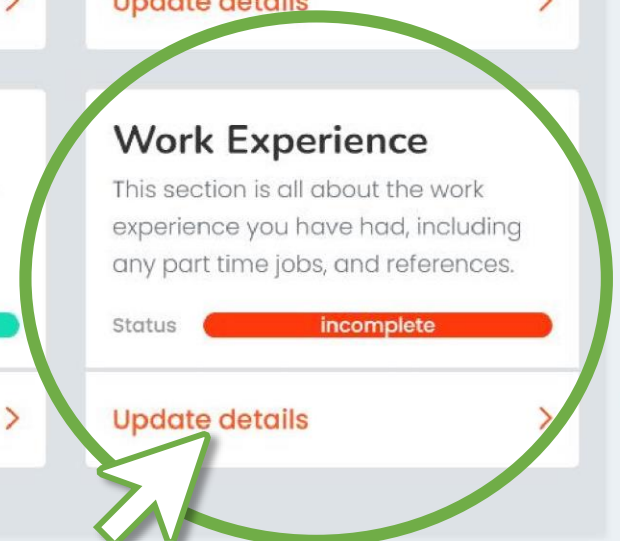
[Update details >](#)

### Work Experience

This section is all about the work experience you have had, including any part time jobs, and references.

Status **incomplete**

[Update details >](#)



[← Back to your profile](#)

## Work Experience

Please write about any work experience you have done, any part-time jobs you have or have had and any volunteering you have undertaken.

### Work Experience

Please write about any work experience you have done, any part-time jobs you have or have had and any volunteering you have undertaken.

☐ I have not had the opportunity to undertake any form of work experience.

### At a glance...

How much have you completed?



Personal Details

Work experience lasted two weeks and I worked at two places. The first week I went to Park Animal Centre and was there for a week. I cleaned out the enclosures and fed the animals. The second week I worked at Pets At Home and stacked shelves, fed the animals and cleaned out the enclosures. I really enjoyed the first week because the people helping me were really helpful and kind to me. The second week was not as good as the people helping were not very helpful.

You have 5000 characters remaining. You have 4535 characters remaining

Save and continue

Cancel



Work Experience

### Work Experience

This section should include details of any work experience or part time jobs you have had. If you haven't completed any work experience you can tick the checkbox to insert the comment for you.

Click **Save and Continue** to save your changes.

# Opportunities

Helping you to make the right choice.

## Search for courses

Full time courses



Search



### Full time courses

Browse our range of both vocational and academic courses and get your

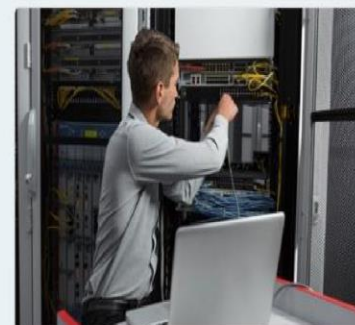


### Adult learning

Browse our range of adult learning courses.



### Employer apprenticeship vacancies



### Employer courses

Browse our range of work related courses

## Course Choices

In this section you can list the courses you are applying for.

If you have added any courses to your favourites list then these are shown at the top of the page.

If not, click on **search for a course online** to find one. This will take you to the course search.

# Full time courses

## Course finder

### Search for courses

[Search](#)

Not quite sure what you're looking for or where to start? Try searching...

[By Provider](#)[By Sector](#)[By Qualification](#)[By Level](#)[By Area](#)

Logo



Logo



Logo



Logo



Logo

# Full time courses

## Course listing

Showing 1 out of 1 available courses.

### Filters

Select the type of course you're interested in to filter your results

2021-2022



- All Areas -



- All Qualifications -



- All Sectors -



- All Levels -



### A Level Chemistry

Training Academy

 GCE A/AS Level or Equivalent  Level 1



*Course Choices continued* You can filter your search down using the filter options on the left.

Click on the course title to have a look at it – this is where you can add it to your favourites.



# A Level Chemistry

## Training Academy

Training Lane., Training Town, Louth, LN11 0WB

GCE A/AS Level or Equivalent Level 1 82

### Image gallery

Click on any image to enlarge.

### Events

December 20, 2020–December 20, 2022

anytime

Training Academy - Virtual Open Day

### Course Choices continued

You can have a look at all the course information using the tabs in the middle. Any pictures for the course will be at the bottom. The course start options and venues will be on the left hand side.

Once you are happy with the course, select the course start from the drop down in the middle and press **Add to Favourites**.

It will ask if you want to return to your application, if you are ready to continue select Yes.

## Added to favourites

A Level Chemistry has been added.

OK

### Available start dates

01 September 2021

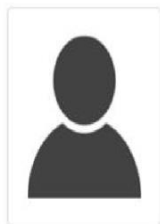
Training Academy 1 Year(s) Full time Daytime/working hours

Add to Favourites

### Course Summary

Year 1 Chemistry A level provides a rigorous foundation in basic chemistry principles that you will have developed at GCSE. In your first year you will further study atoms, bonding structures and the periodic table. In the final term you will look at energy and everyday issues especially those related to the environment. Wherever possible we will use modern developments and the application of chemistry to provide relevance. Year 2 In your second year you will continue to develop your knowledge of chemistry by studying areas such as polymers, chemical analysis, transition metal chemistry and organic chemistry. A wide range of teaching methods are included to develop your

< Back to search results

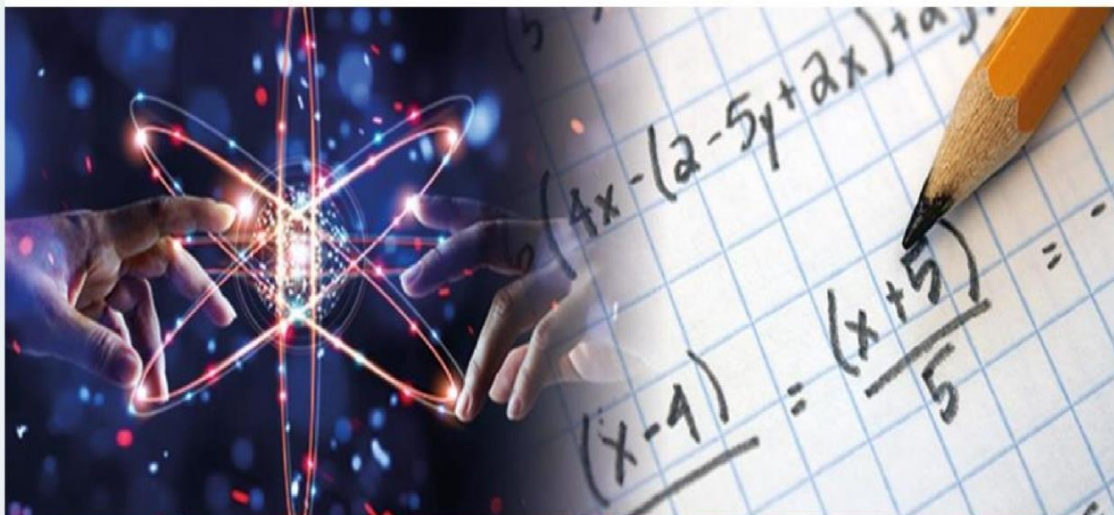


# A Level Chemistry

## Training Academy

Training Lane, Training Town, Louth, LN11 0WB

GCE A/AS Level or Equivalent Level 1 82



### Available start dates

01 September 2021

Training Academy 1 Year(s) Full time Daytime/working hours

Add to Favourites

### Image gallery

Click on any image to enlarge.

### Events

December 20, 2020-December 20, 2022

anytime

Training Academy - Virtual Open Day

When you are ready to apply, go back to 'Your Account'

# Your account

Get the most out of all the eProspectus services you use.



Welcome back, **Aiden**

What do you want to do today?

## Apply

You need to fully complete both your profile and next steps before you can make an application.

### Your profile

A record of your information.

Status complete

[Update your details](#)

### Your next step

Where you plan to go after year 11?

Status incomplete

[Change destination](#)

### Your Applications

Management centre.

[Review applications](#)

## At a glance...

Everything you need to know about in one handy place.

0

### Applications

You haven't created an application yet.

*Open your applications page.*

# Your applications

Create a new application or check an existing one.

[← Back to your account](#)

Hi **Aiden**, you've got this!

You can create a new application or review your existing applications.

## Standard Application

This is the most popular application and can be used for any provider.

Create a new application

## At a glance...

Everything you need to know about in one handy place.

0

### Applications

You haven't created an application yet.

Select to create a new application.

# Choose a provider

Select the provider for this application.



**Aiden**, let's pick the provider you're applying to.

Choose from the list below.

Training Academy

Save and continue

Cancel

Logo

Logo

Logo

Logo

Logo

*First select the Provider/College/Sixth form that you want to apply to.*


# Draft application

Training Academy (315500)

[← Back to your applications](#)

## Are you ready, Aiden?

Your Application ID is 315500. If you have any problems, please refer to this number.

 You have not sent this application.

### Personal Details

Status



[Update details](#)



### Address

Status



[Update details](#)



### Health

Status



[Update details](#)



### Parental Details

Status



[Update details](#)



### Qualifications

### Personal Statement

### Equality and Diversity

### Work Experience

# Course choices

For Training Academy (315500)

[← Back to your application](#)

## It is time to choose...

Select each course you would like to include in your application.

1. First, choose a course from your favourites list.

### Training Academy

A Level Chemistry (01/09/2021)

A Level History (01/09/2021)

A Level Physics (01/09/2021)

## Add Course

Are you sure you want to add A Level Chemistry?

Add Course

Cancel

Add course

Add course

Add course

Next select the courses that you want to apply to.

## Training Academy

A Level Chemistry (01/09/2021)

Unavailable

A Level History (01/09/2021)

Unavailable

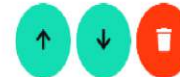
A Level Physics (01/09/2021)

Unavailable

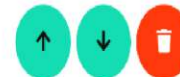
2. Double-check your choice and order by preference. Please note - any courses with a red background are no longer available and need to be removed from your application.

## Training Academy

1 A Level Chemistry (Level 1)



2 A Level History (Level 1)



3 A Level Physics (Level 1)



## 3. Why have you chosen the course(s)?

For example, they will lead to a type of career, it's an area that you are interested in etc. If you have chosen different types of courses, you should also explain why. Don't feel you have to write too much here.

## Course Choices continued

Some providers allow you to make multiple applications to them, if they don't then the favourites will be greyed out with a message to let you know why.

Press **Add Course** on the course you wish to apply for.

If you can add more than one course you can order them by your preference by dragging and dropping them or clicking the up/down buttons.

Add an explanation why you would like to do the course(s) and click **Save and Continue** to save your changes.

1. First, choose a course from your favourites list.

### Training Academy

A Level Chemistry (01/09/2021)

Unavailable

A Level History (01/09/2021)

Unavailable

A Level Physics (01/09/2021)

Unavailable

2. Double-check your choice and order by preference. Please note - any courses with a red background are no longer available and need to be removed from your application.

### Training Academy

I have chosen History as I really enjoy the subject and I would possibly like to be a historian in the future. I also enjoy science too and have thought of being a Chemist.

3

A Level Physics (Level



3. Why have you chosen the course(s)?


For example, they will lead to a type of career, it's an area that you are interested in etc. If you have chosen different types of courses, you should also explain why. Don't feel you have to write too much here.

### Course Choices continued

This part gives you the opportunity to talk more specifically about which courses you have chosen and why. So where your Personal Statement was more about you and your skills and qualities, this section is about your aspirations and your interest in the courses.

## Are you ready, Aiden?

Your Application ID is 315500. If you have any problems, please refer to this number.


 You have not sent this application.

### Personal Details

Status 

[Update details](#) >

### Address

Status 

[Update details](#) >

### Health

Status 

[Update details](#) >

### Parental Details

Status 

[Update details](#) >

### Qualifications

Status 

[Update details](#) >

### Personal Statement

Status 

[Update details](#) >

### Equality and Diversity

Status 

[Update details](#) >

### Work Experience

Status 

[Update details](#) >

### Course Choices

You have 3 courses selected.

Status 

[Add/remove courses](#) >

### Review & Send Your Application

Status 

[Send application](#) >



## Preference

### Application Preference

Ple 1

## Additional support

Will you need support at your College interview?

If you answer yes to this question, the college may contact you for further information

No

## Consent

Please note that if you do not consent, we will not be able to process your application. Please consent using a different format. Please consent

☒

I have read and give my explicit consent for my personal information about me that is saved on site to be held by Firstshire, and for this information to be shared with my existing and other educational institutions This includes schools/academies, colleges and training providers to whom I apply, and for the purposes described in, and processed in accordance with, The General Data Protection Regulation (GDPR) (EU) 2016/679 and the Data Protection Act 2018 [subject to Royal Assent], and outlined in the site's [Privacy Notice](#). The information will only be processed for the purposes of training and education and the provision of grants and benefits.

☒

I have reviewed the application, I'm satisfied with the contents and wish to send it to the provider.

Send your application

Cancel

## Send Application

Are you happy to continue?

Yes, I'm happy

Cancel

## Review & Send Your

### Application

This final page allows you to review all the sections in one go, you can edit any of the pages by clicking the **Edit** button in each of the sections.

The provider may have some questions for you to answer, these are at the end of the page.

Complete any additional fields or checkboxes and click the **Send Application** button to send your application.

# Well done. Your application has moved to the next stage!



Please take a moment to rate your experience by clicking on a face below.



If you have any questions, please don't hesitate to contact us.

Logo

Logo

Logo

Logo

Logo

# Your applications

Create a new application or check an existing one.



[← Back to your account](#)

Hi **Aiden**, you've got this!

You can create a new application or review your existing applications.

## Standard Application

This is the most popular application and can be used for any provider.

[Create a new application](#)

## At a glance...

Everything you need to know about in one handy place.



### Information

You are all up to date :)

## Existing applications

Check back often to see any changes.

[Re-order my preferences](#)

[Set my final choice](#)

### Schools Hold

Your application will be sent once the school have released it..

1

Training Academy (315500)

[PDF](#)

Logo

Logo

Logo

Logo

Logo

## Your Local Online Careers Gateway

We know it can sometimes be difficult to find what you are looking for, so if you have any questions or suggestions just ask and get in touch with us!

[info@eprospectus.co.uk](mailto:info@eprospectus.co.uk)

### Useful links

[Information & Guidance](#)

[Opportunities](#)

[Get in touch](#)

### Other websites

[eProspectus](#)

[eProspectus](#)

[eProspectus](#)

### Get social

[Twitter](#)

[Facebook](#)

[YouTube](#)

Your application will now be at the next status **Schools Hold**

This will then be checked and your reference added before being released to the college

You can monitor the status by visiting this screen **Application** button to send your application.

About our prospectus

# Welcome to our eProspectus

Lorem ipsum dolor sit amet, consectetur adipisicing elit, do eius mod tempor incididunt ut labore et dolore magna aliqua. Ut enim ad min im veniam, quis nostrud exercitationi ullamco laboris nisi ut aliquip ex ea commodo consequat.

Lorem ipsum dolor sit amet, consectetur adipisicing elit, do eius mod tempor incididunt ut labore et dolore magna aliqua.

[Opportunities >](#)


If the provider, your school or tutor has sent you a message about the application, you can click the envelope icon on the left of the application to read it and reply.

When your application has been processed by the provider and they schedule your guidance meeting or choose to send you an offer, you can accept or reject it in this screen. Click on the **Accept/Reject** or **Your Offer** button to view the meeting/offer and make your choice.

You can press cancel if you are not ready to reply yet.

Once accepted/rejected, the status of your application will change.

If you have any questions about the application process, or to request an appointment with our Careers advisor please contact your Head of Year or Pastoral Manager who will be able to help.

## Exciting Upcoming Events



### Virtual Open Day

📅 December 20, 2020–  
December 20, 2022  
anytime



### Spaghetti Slurping Day

📅 December 25, 2021  
8am-10pm



### World Made Up Day

📅 February 3, 2022–December 2,  
2021  
12pm

[See all events >](#)

## What's been happening?